



PRODUCT CATALOGUE

ABOUT US

Constar Pty Ltd is an Australian owned family business established in 2005 with the aim and commitment to offering the best quality, competitively priced, polymer based medical hollowware products, available anywhere in the world.

Our products are suitable for a wide variety of applications including:

- + Hospital & Healthcare Facilities
- + Medical Equipment Manufacturers
- + Health Clinics & Day Surgeries
- + Procedure Pack Manufacturers
- + Medical Equipment Distributors

Many years later, we are proud to say that Constar's products have been continually recognised for outstanding quality and exceeding customer expectations, having been recognised as one of Australia's leading suppliers of disposable and reusable medical supplies.

Our products are utilised throughout hospital wards and theatres, day surgeries, nursing and respite facilities, GP and dental clinics, pharmacies, laboratories, universities and other healthcare facilities throughout the country, and beyond. Significantly, they commonly compliment other capital, consumable and surgical products and equipment used within all of these facility types. Our products are also well suited for inclusion into custom procedure packs and kits. We currently serve many multinational blue chip companies in this regard.

Many customers benefit from the 'can do', responsive and friendly approach of our team. We service customers throughout Australia, New Zealand, Papua New Guinea, Malaysia, Singapore and Hong Kong. Additionally, our partners have also benefited from our products that have been designed to offer solutions to a variety of patient, staff and environmental problems that challenge the healthcare industry, particularly in regards to cost, safety and infection control.

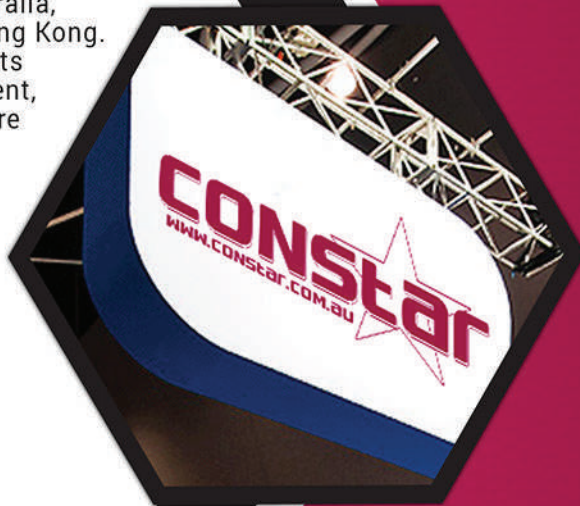
Constar provides more than medical and healthcare products. We offer a partnership. We invite you to experience Constar's dedication to quality, co-operation and dependability.

INDEX

About Us	1
Quality Assurance	2
Medicue Measures	3
Medicine Measure Lids	4
Disposable Bowls	5-7
Reusable Bowls	8-11
Disposable Kidney Dishes	12
Reusable Kidney Dishes	13
Disposable Procedure Trays	14-15
Disposable Gallipots	16
Denture Bowls, Lids	17

Updated: December 2019

* Products recyclable at the discretion of the user with decontamination procedures/guidelines.



QUALITY ASSURANCE

Constar Pty Ltd has implemented and maintains a strict Quality Management System, which meets the requirements of AS/NZS ISO 9001:2016.



30ML MEDICINE MEASURE

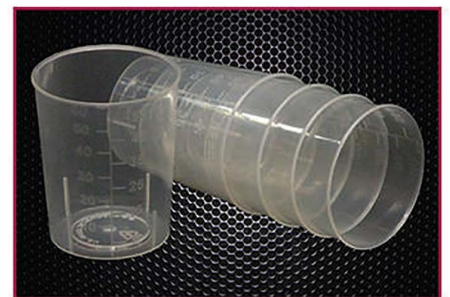
Quantity	2500 pieces/carton; (50 sleeves x 100 pieces)
Size	30mL - 45mm x 34mm (approx.)
Graduations	2.5, 5, 7.5, 10 - 30mL, increments of 5mL
Colour	Clear
Material	Polypropylene
Other	<ul style="list-style-type: none"> ⚠ Non Sterile ⊗ Single Use / Disposable ♻ Recyclable* ⊘ Contains No Latex ☑ Sterilisable - ETO recommended



Order Code	Quantity	Colour
MM30	2500	Clear

60ML MEDICINE MEASURE

Quantity	1000 pieces/carton; (40 sleeves x 25 pieces)
Size	60mL - 45mm x 55mm (approx.)
Graduations	5 - 60mL, increments of 5mL
Colour	Clear
Material	Polypropylene
Other	<ul style="list-style-type: none"> ⚠ Non Sterile ⊗ Single Use / Disposable ♻ Recyclable* ⊘ Contains No Latex ☑ Sterilisable - ETO recommended



Order Code	Quantity	Colour
MM60	1000	Clear

MEDICINE MEASURE LID

Quantity	1000 pieces/carton
Size	47mm x 4mm (approx.)
Compatible	Fits Constar 30mL & 60mL Measures
Colour	Clear
Material	Polypropylene
Other	<ul style="list-style-type: none"> ⚠ Non Sterile ⊗ Single Use / Disposable ☒ Contains No Latex ♻ Recyclable* EO Sterilisable - ETO recommended



Order Code	Quantity	Colour
MML30	1000	Clear

NOTES

250ML DISPOSABLE BOWL

Quantity	500 pieces/carton; (20 bags x 25 pieces)
Size	250mL - 95mm x 50mm (approx.)
Graduations	50 - 250mL, increments of 50mL
Colours	Clear, Blue, Green (Other upon request)
Material	Polypropylene
Other	<ul style="list-style-type: none"> ⚠ Non Sterile ⊗ Single Use / Disposable ♻ Recyclable* ☑ Contains No Latex ☑ Sterilisable - ETO recommended
Optional	Lid to suit also available Refer to page 17



Order Code	Quantity	Colour
B250C	500	Clear
B250B	500	Blue
B250G	500	Green

500ML DISPOSABLE BOWL

Quantity	300 pieces/carton; (12 bags x 25 pieces)
Size	500mL - 115mm x 60mm (approx.)
Graduations	50 - 500mL, increments of 50mL
Colours	Clear, Blue, Green (Other upon request)
Material	Polypropylene
Other	<ul style="list-style-type: none"> ⚠ Non Sterile ⊗ Single Use / Disposable ♻ Recyclable* ☑ Contains No Latex ☑ Sterilisable - ETO recommended



Order Code	Quantity	Colour
B500C	300	Clear
B500B	300	Blue
B500G	300	Green

1000ML DISPOSABLE BOWL

Quantity	270 pieces/carton; (9 bags x 30 pieces)
Size	1000mL - 145mm x 80mm (approx.)
Graduations	100 - 1000mL, increments of 100mL
Colours	Clear, Blue, Green (Other upon request)
Material	Polypropylene
Other	<ul style="list-style-type: none"> ⚠ Non Sterile ⊗ Single Use / Disposable ♻ Recyclable* ☑ Contains No Latex ☑ Sterilisable - ETO recommended



Order Code	Quantity	Colour
B1000C	270	Clear
B1000B	270	Blue
B1000G	270	Green

2000ML DISPOSABLE BOWL

Quantity	100 pieces/carton; (4 bags x 25 pieces)
Size	2000mL - 195mm x 90mm (approx.)
Graduations	500 - 2000mL, increments of 500mL
Colours	Clear, Blue, Green (Other upon request)
Material	Polypropylene
Other	<ul style="list-style-type: none"> ⚠ Non Sterile ⊗ Single Use / Disposable ♻ Recyclable* ☑ Contains No Latex ☑ Sterilisable - ETO recommended



Order Code	Quantity	Colour
B2000C	100	Clear
B2000B	100	Blue
B2000G	100	Green

5000ML DISPOSABLE BOWL

Quantity	50 pieces/carton; (5 bags x 10 pieces)
Size	5000mL - 260mm x 110mm (approx.)
Graduations	500 - 5000mL, increments of 500mL
Colours	Clear, Blue, Green (Other upon request)
Material	Polypropylene
Other	<ul style="list-style-type: none"> ⚠ Non Sterile ⊗ Single Use / Disposable ♻ Recyclable* ☑ Contains No Latex EO Sterilisable - ETO recommended



Order Code	Quantity	Colour
B5000C	50	Clear
B5000B	50	Blue
B5000G	50	Green

6000ML DISPOSABLE BOWL

Quantity	40 pieces/carton; (4 bags x 10 pieces)
Size	6000mL - 295mm x 110mm (approx.)
Graduations	1000 - 6000mL, increments of 500mL
Colours	Clear, Blue, Green (Other upon request)
Material	Polypropylene
Other	<ul style="list-style-type: none"> ⚠ Non Sterile ⊗ Single Use / Disposable ♻ Recyclable* ☑ Contains No Latex EO Sterilisable - ETO recommended



Order Code	Quantity	Colour
B6000C	40	Clear
B6000B	40	Blue
B6000G	40	Green

150ML REUSABLE BOWL

Quantity	10 pieces/carton
Size	150mL - 100mm x 50mm (approx.)
Graduations	50 - 150mL, increments of 50mL
Colours	Green, Yellow (Other upon request)
Material	Polypropylene
Other	<ul style="list-style-type: none"> ⚠ Non Sterile 🔧 Autoclavable with separator lugs ♻ Heavy duty for repeated use ♻ Recyclable* 🚫 Contains No Latex 📄 Product Cleaning & Sterilisation Instructions available 📄 Sterilisable - Steam, ETO recommended



Order Code	Quantity	Colour
B100GU	10	Green
B100YU	10	Yellow

500ML REUSABLE BOWL

Quantity	10 pieces/carton
Size	500mL - 140mm x 60mm (approx.)
Graduations	100 - 500mL, increments of 100mL
Colours	Green, Yellow (Other upon request)
Material	Polypropylene
Other	<ul style="list-style-type: none"> ⚠ Non Sterile 🔧 Autoclavable with separator lugs ♻ Heavy duty for repeated use ♻ Recyclable* 🚫 Contains No Latex 📄 Product Cleaning & Sterilisation Instructions available 📄 Sterilisable - Steam, ETO recommended



Order Code	Quantity	Colour
B140GU	10	Green
B140YU	10	Yellow

1000ML REUSABLE BOWL

Quantity	10 pieces/carton
Size	1000mL - 185mm x 90mm (approx.)
Graduations	250 - 1000mL, increments of 250mL
Colours	Green, Yellow (Other upon request)
Material	Polypropylene
Other	<ul style="list-style-type: none"> ⚠ Non Sterile 🔧 Autoclavable with separator lugs ♻ Heavy duty for repeated use ♻ Recyclable* 🚫 Contains No Latex 📄 Product Cleaning & Sterilisation Instructions available 🧼 Sterilisable - Steam, ETO recommended



Order Code	Quantity	Colour
B185GU	10	Green
B185YU	10	Yellow

1500ML REUSABLE BOWL

Quantity	10 pieces/carton
Size	1500mL - 205mm x 80mm (approx.)
Graduations	250 - 1500mL, increments of 250mL
Colours	Green, Yellow (Other upon request)
Material	Polypropylene
Other	<ul style="list-style-type: none"> ⚠ Non Sterile 🔧 Autoclavable with separator lugs ♻ Heavy duty for repeated use ♻ Recyclable* 🚫 Contains No Latex 📄 Product Cleaning & Sterilisation Instructions available 🧼 Sterilisable - Steam, ETO recommended



Order Code	Quantity	Colour
B205GU	10	Green
B205YU	10	Yellow

2500ML REUSABLE BOWL

Quantity	10 pieces/carton
Size	2500mL - 240mm x 110mm (approx.)
Graduations	250 - 2500mL, increments of 250mL
Colours	Green, Yellow (Other upon request)
Material	Polypropylene
Other	<ul style="list-style-type: none"> ⚠ Non Sterile 🔧 Autoclavable with separator lugs ♻ Heavy duty for repeated use ♻ Recyclable* 🚫 Contains No Latex 📄 Product Cleaning & Sterilisation Instructions available 🧼 Sterilisable - Steam, ETO recommended



Order Code	Quantity	Colour
B240GU	10	Green
B240YU	10	Yellow

3500ML REUSABLE BOWL

Quantity	10 pieces/carton
Size	3500mL - 305mm x 90mm (approx.)
Graduations	500 - 3500mL, increments of 500mL
Colours	Green, Yellow (Other upon request)
Material	Polypropylene
Other	<ul style="list-style-type: none"> ⚠ Non Sterile 🔧 Autoclavable with separator lugs ♻ Heavy duty for repeated use ♻ Recyclable* 🚫 Contains No Latex 📄 Product Cleaning & Sterilisation Instructions available 🧼 Sterilisable - Steam, ETO recommended



Order Code	Quantity	Colour
B305GU	10	Green
B305YU	10	Yellow

6000ML REUSABLE BOWL

Quantity	10 pieces/carton
Size	6000mL - 345mm x 120mm (approx.)
Graduations	1000 - 6000mL, increments of 500mL
Colours	Green, Yellow (Other upon request)
Material	Polypropylene
Other	<ul style="list-style-type: none"> ⚠ Non Sterile 🔧 Autoclavable with separator lugs 🔄 Heavy duty for repeated use ♻ Recyclable* 🚫 Contains No Latex 📖 Product Cleaning & Sterilisation Instructions available 🧼 Sterilisable - Steam, ETO recommended



Order Code	Quantity	Colour
B345GU	10	Green
B345YU	10	Yellow

NOTES

700ML DISPOSABLE KIDNEY DISH

Quantity	250 pieces/carton; (10 bags x 25 pieces)
Size	700mL - 230mm x 120mm x 45mm (approx.)
Graduations	100 - 700mL, increments of 100mL
Colours	Clear, Blue, Green, Yellow (Other upon request)
Material	Polypropylene
Other	<ul style="list-style-type: none"> ⚠ Non Sterile ⊗ Single Use / Disposable ♻ Recyclable* 🚫 Contains No Latex ☑ Sterilisable - ETO recommended



Order Code	Quantity	Colour
DK700CS	250	Clear
DK700BS	250	Blue
DK700GS	250	Green
DK700YS	250	Yellow

NOTES

700ML REUSABLE KIDNEY DISH

Quantity	100 pieces/carton; (10 bags x 10 pieces)
Size	700mL - 230mm x 120mm x 45mm (approx.)
Graduations	100 - 700mL, increments of 100mL
Colours	Clear, Blue, Green, Yellow (Other upon request)
Material	Polypropylene
Other	<ul style="list-style-type: none"> ⚠ Non Sterile 🔧 Autoclavable with separator lugs ♻ Heavy duty for repeated use ♻ Recyclable* 🚫 Contains No Latex 📖 Product Cleaning & Sterilisation Instructions available 🧼 Sterilisable - Steam, ETO recommended



Order Code	Quantity	Colour
DK700CU	100	Clear
DK700BU	100	Blue
DK700GU	100	Green
DK700YU	100	Yellow

1000ML REUSABLE KIDNEY DISH

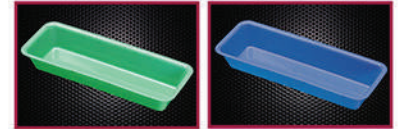
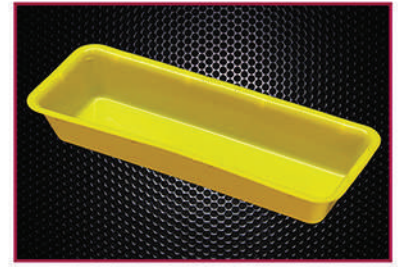
Quantity	100 pieces/carton; (10 bags x 10 pieces)
Size	1000mL 320mm x 150mm x 50mm (approx.)
Graduations	200 - 900mL, increments of 100mL
Colours	Clear, Blue, Green, Yellow (Other upon request)
Material	Polypropylene
Other	<ul style="list-style-type: none"> ⚠ Non Sterile 🔧 Autoclavable with separator lugs ♻ Heavy duty for repeated use ♻ Recyclable* 🚫 Contains No Latex 📖 Product Cleaning & Sterilisation Instructions available 🧼 Sterilisable - Steam, ETO recommended



Order Code	Quantity	Colour
DK1000CU	100	Clear
DK1000BU	100	Blue
DK1000GU	100	Green
DK1000YU	100	Yellow

200ML DISPOSABLE PROCEDURE TRAY

Quantity	350 pieces/carton; (7 bags x 50 pieces)
Size	200mL - 200mm x 70mm x 30mm (approx.)
Graduations	50 - 200mL, increments of 50mL
Colours	Clear, Blue, Green, Yellow (Other upon request)
Material	Polypropylene
Other	<ul style="list-style-type: none"> ⚠ Non Sterile ⊗ Single Use / Disposable ♻ Recyclable* ☑ Contains No Latex EO Sterilisable - ETO recommended



Order Code	Quantity	Colour
TP200C	350	Clear
TP200B	350	Blue
TP200G	350	Green
TP200Y	350	Yellow

500ML DISPOSABLE PROCEDURE TRAY

Quantity	175 pieces/carton; (7 bags x 25 pieces)
Size	500mL - 260mm x 90mm x 40mm (approx.)
Graduations	100 - 500mL, increments of 100mL
Colours	Clear, Blue, Green, Yellow (Other upon request)
Material	Polypropylene
Other	<ul style="list-style-type: none"> ⚠ Non Sterile ⊗ Single Use / Disposable ♻ Recyclable* ☑ Contains No Latex EO Sterilisable - ETO recommended



Order Code	Quantity	Colour
TP500C	175	Clear
TP500B	175	Blue
TP500G	175	Green
TP500Y	175	Yellow

1500ML MULTI-PURPOSE TRAY

Quantity	80 pieces/carton; (4 bags x 20 pieces)
Size	1500mL, 245mm x 205mm x 40mm (approx)
Colours	Clear, Blue, Green, Yellow (Other upon request)
Material	Polypropylene
Other	<ul style="list-style-type: none"> ⚠ Non Sterile ⊗ Single Use / Disposable ♻ Recyclable* ⊘ Contains No Latex ☑ Sterilisable - ETO recommended



Order Code	Quantity	Colour
MT01C	80	Clear
MT01B	80	Blue
MT01G	80	Green
MT01Y	80	Yellow

NOTES

60ML DISPOSABLE GALLIPOT

Quantity	1000 pieces/carton
Size	60mL - 70mm x 25mm (approx.)
Graduations	10 - 60mL, increments of 10mL
Colours	Clear (Other upon request)
Material	Polypropylene
Other	<ul style="list-style-type: none"> ⚠ Non Sterile ⊗ Single Use / Disposable ♻ Recyclable* 🚫 Contains No Latex ☑ Sterilisable - ETO recommended



Order Code	Quantity	Colour
BG60C	1000	Clear

150ML DISPOSABLE GALLIPOT

Quantity	1000 pieces/carton
Size	150mL - 77mm x 55mm (approx.)
Graduations	10 - 150mL, Increments of 10mL
Colours	Clear (Other upon request)
Material	Polypropylene
Other	<ul style="list-style-type: none"> ⚠ Non Sterile ⊗ Single Use / Disposable ♻ Recyclable* 🚫 Contains No Latex ☑ Sterilisable - ETO recommended



Order Code	Quantity	Colour
BG150C	1000	Clear

250ML DENTURE BOWL & LID

Quantity	50 pieces/carton; (50 bowls & 50 lids)
Size	250mL - 95mm x 53mm (approx.)
Graduations	50 - 250mL, increments of 50mL
Colours	Clear, Blue, Green (Other upon request)
Material	Polypropylene Bowl / Polyethylene Lid
Other	<ul style="list-style-type: none"> ⚠ Non Sterile ⊗ Single Use / Disposable ✍ Writable patient details on lid; Name, Contents, Room/Bed & Date ♻ Recyclable* ⊘ Contains No Latex EO Sterilisable - ETO recommended



Order Code	Quantity	Colour
B250CL50	50	Clear
B250BL50	50	Blue
B250GL50	50	Green

DISPOSABLE LIDS

Quantity	500 pieces/carton
Size	110mm x 7mm (approx.)
Compatible	Suits 250mL Disposable Bowl (page 5)
Colour	Clear/Natural
Material	Polyethylene
Other	<ul style="list-style-type: none"> ⚠ Non Sterile ⊗ Single Use / Disposable ✍ Writable patient details on lid; Name, Contents, Room/Bed & Date Thumb tab for easy removal ♻ Recyclable* ⊘ Contains No Latex EO Sterilisable - ETO recommended



Order Code	Quantity	Colour
L500	500	Natural



CONTACT US

-  **Constar Pty Ltd**
Unit 4, 68 Parramatta Road,
Underwood QLD, Australia 4119
-  1300 778 924
-  info@constar.com.au
-  www.constar.com.au

Constar Pty Ltd ATF B&S Trust
ABN: 64 310 518 715

YOUR LOCAL REPRESENTATIVE

